

MONTHLY MEMBERSHIP PROGRESS REPORT

District 23 A

Results as of: 6/30/2024

GMT:

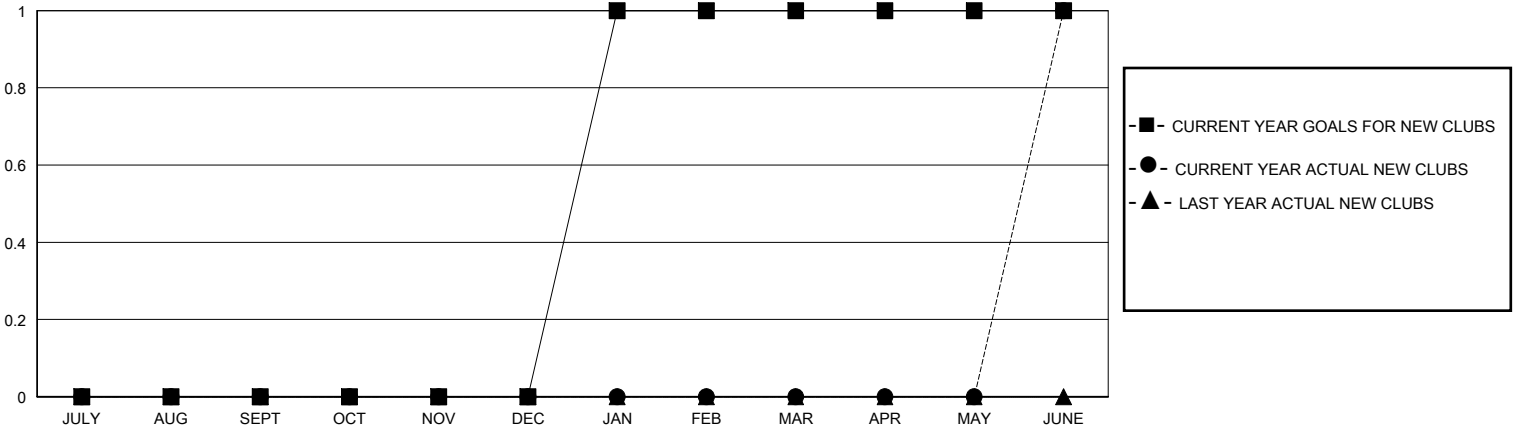
LOCATION CONNECTICUT

GMT CA

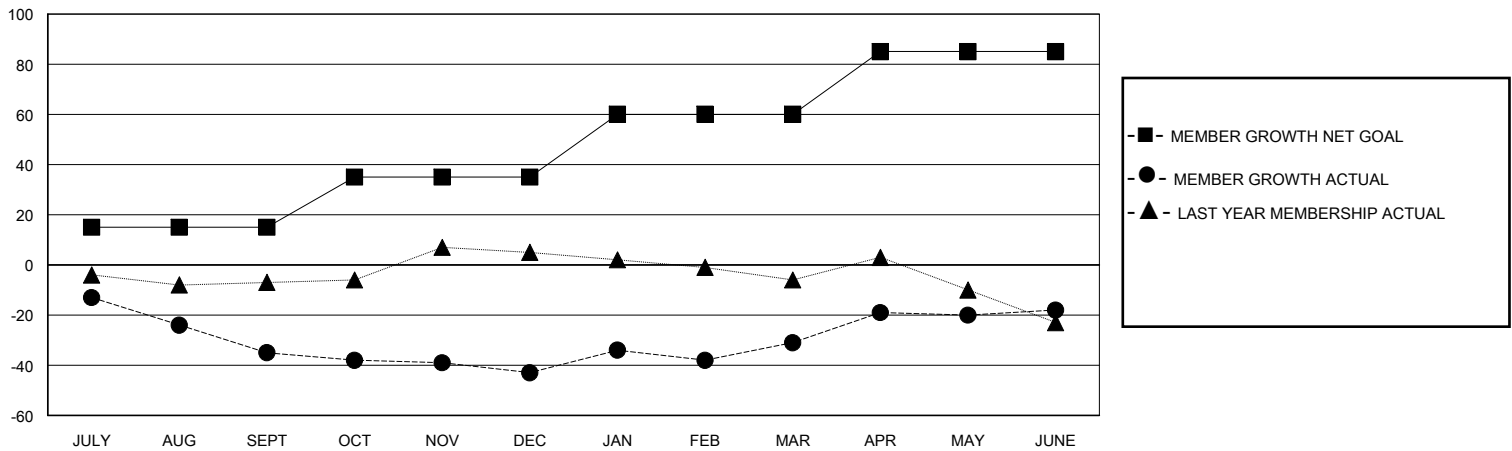
Clubs			
RESULTS FOR 2023-2024			
QUARTER	NEW CLUB GOAL	NEW CLUBS	DROPPED CLUBS
JULY/AUG/SEPT	0	0	1
OCT/NOV/DEC	0	0	0
JAN/FEB/MAR	1	0	0
APR/MAY/JUNE	0	1	0

Members			
RESULTS FOR 2023-2024			
QUARTER	MEMBER GROWTH NET GOAL	MEMBER GROWTH ACTUAL	DROPPED MEMBERS ACTUAL (including transfers)
JULY/AUG/SEPT	15	26	57
OCT/NOV/DEC	20	42	47
JAN/FEB/MAR	25	34	20
APR/MAY/JUNE	25	66	50

GOALS AND ACTUAL NEW CLUBS CUMULATIVE



GOALS AND ACTUAL MEMBERS CUMULATIVE



DROPPED CLUBS: 1	33 CLUBS OF 48 ADDED 1 OR MORE NEW MEMBERS	GENDER DISTRIBUTION MALE 776 (61.69%) FEMALE 482 (38.31%)
DROPPED MEMBERS DECEASED 20 CLUB CANCELLED 0 OTHER 154 TOTAL 174	CLICK HERE FOR CUMULATIVE MEMBERSHIP DATA	TOTAL FAMILY UNIT MEMBERS 176 FAMILY MEMBERS PAYING HALF DUES 91